

# CRYSTAL POINTE PLAT FOUR

PART OF CRYSTAL POINTE P.U.D.

SITUATE IN SECTION 29, TOWNSHIP 41 SOUTH, RANGE 43 EAST  
PALM BEACH COUNTY, FLORIDA

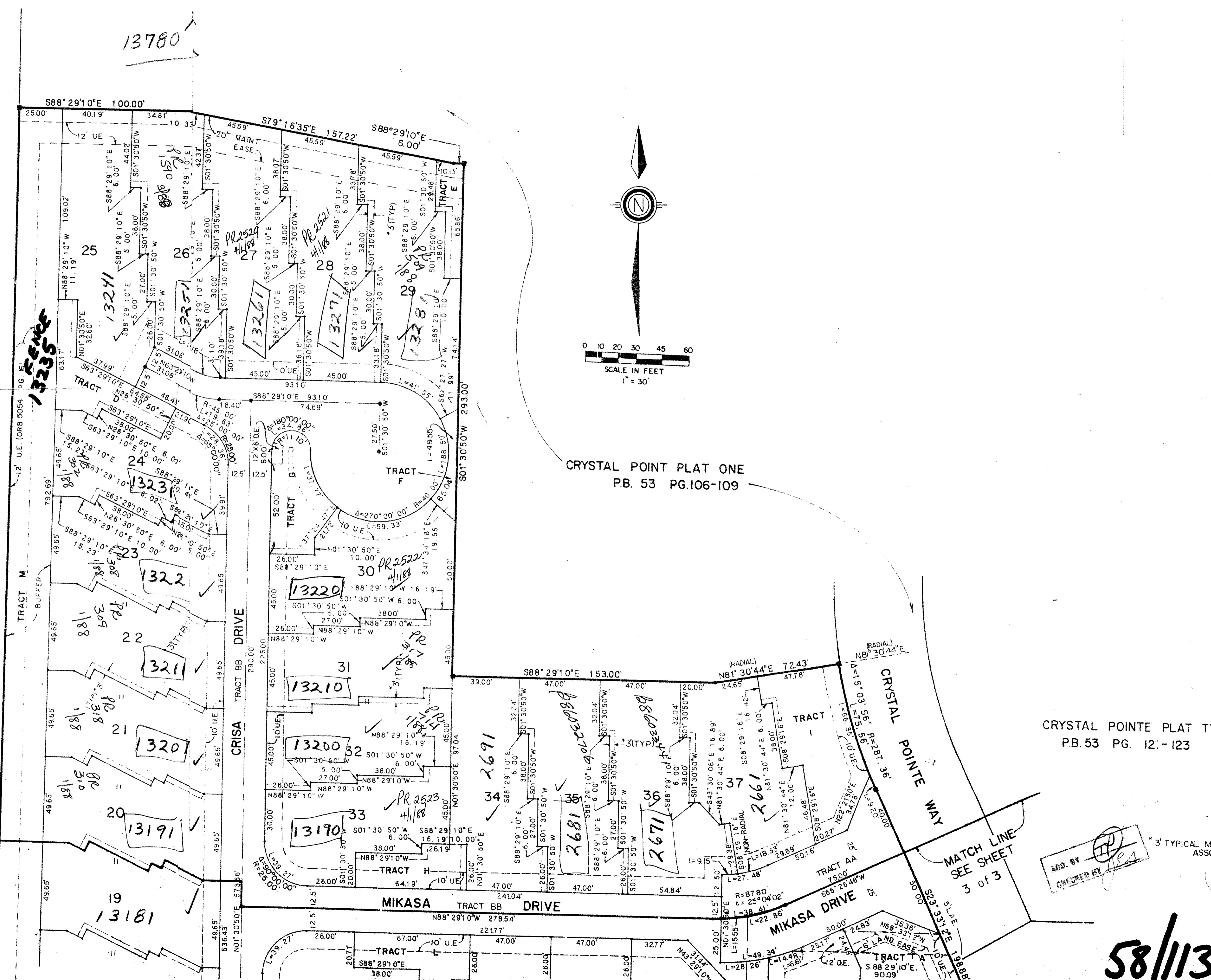
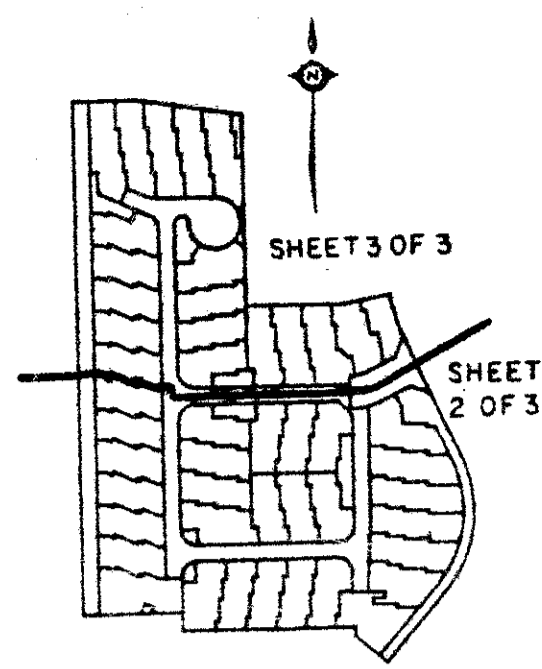
1987

SHEET 3 OF 3

STATE OF FLORIDA  
 COUNTY OF PALM BEACH

THIS PLAT WAS FILED FOR  
 RECORD \_\_\_\_\_ DAY OF \_\_\_\_\_  
 AD, 1987 AND DULY RECORDED  
 IN PLAT BOOK \_\_\_\_\_ ON PAGES  
 \_\_\_\_\_ AND \_\_\_\_\_

JOHN B. DUNKLE, CLERK  
 BY: \_\_\_\_\_, D.C.



CRYSTAL POINTE PLAT ONE  
 P.B. 53 PG.106-109

CRYSTAL POINTE PLAT TWO  
 P.B. 53 PG. 121-123

SUBDIVISION \* Crystal Pointe  
 BOOK 58 PAGE 113 FLOOR PLAN \* 195  
 FLOOD ZONE B QUAD # 12 TOWN # RS  
 SE PUD ZIP CODE 33410  
 PUD NAME - Plate 4

UNPLATTED

APPROVED BY [Signature]  
 CHECKED BY [Signature]

\* TYPICAL MAINTENANCE ACCESS EASEMENT - REFER TO HOMEOWNERS ASSOCIATION DOCUMENTS.

0291-004

58/113

Meridian Surveying and mapping inc.  
 2000 LOWBARD STREET WEST PALM BEACH, FL.

DRAWN MHC / JJK	DATE 9-15-86
CHECKED WBH	SCALE 1" = 30'
DRAWING NO. 85-P4-035	

CRYSTAL POINTE PLAT FOUR  
 PART OF  
 CRYSTAL POINTE P.U.D.